

Victimisation in Aotearoa New Zealand:

New Zealand Crime and Victims **survey**

HELP CREATE SAFER COMMUNITIES

CYCLE 5 | November 2021 – November 2022



31% of adults experienced at least one offence in the last 12 months¹

17% of adults experienced one or more personal offences



12%
experienced fraud and cybercrime



6%
experienced interpersonal violence



5%
experienced theft and damage offences

19% of households experienced one or more household offences



10%
experienced burglary



7%
experienced vehicle offences



2%
experienced trespass offences

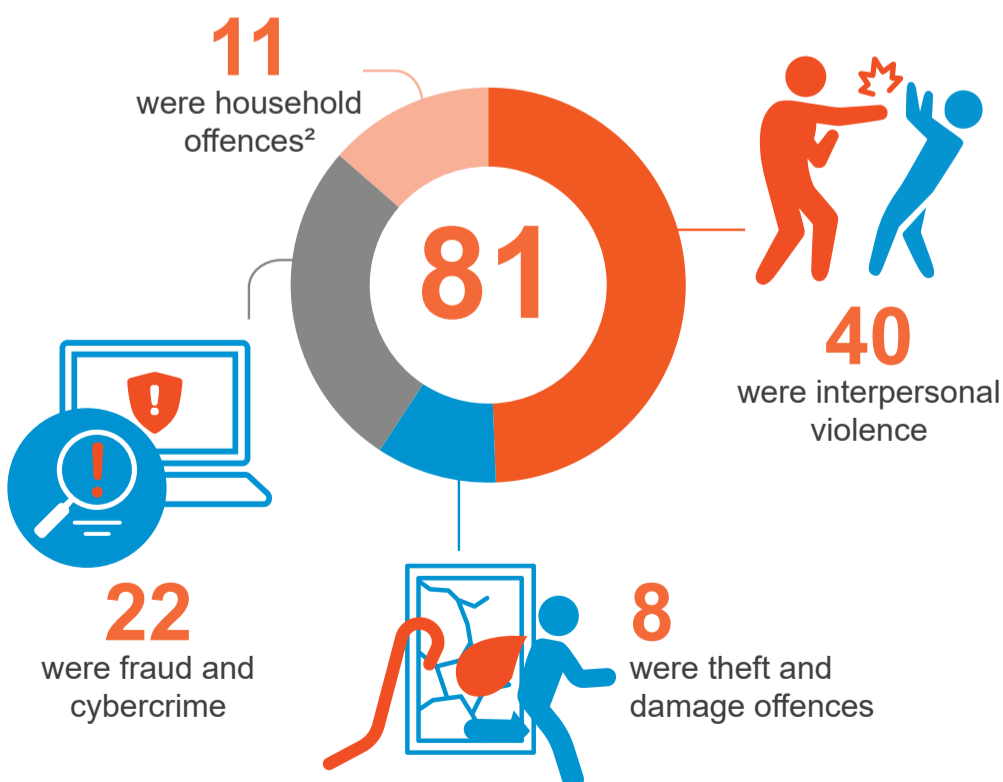
For every 100 offences:

19 were reported to the Police

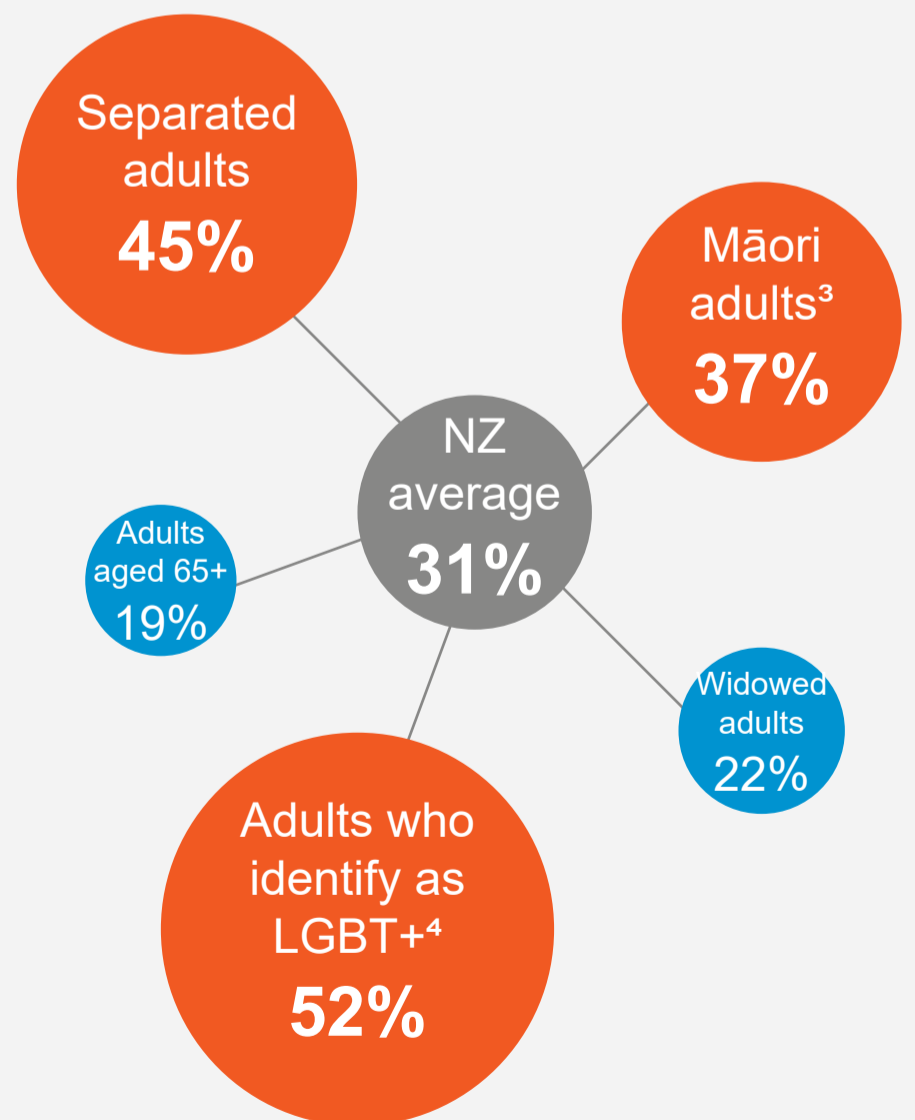


81 were **not** reported to the Police

Of the **81** offences that were **not** reported:



Adults who are more or less likely to be victimised when compared to the New Zealand average (31%)



¹ The term "Adults" refers to people aged 15 years or over. The statistic is person weighted. This means the statistics relate to offences against adults where they were a victim of a personal offence or who lived in a household that was a victim of a household offence.

² Household offences include burglary; vehicle offences; and trespass.

³ Analysis shows that Māori are younger and live in more deprived areas and these factors contribute to their higher likelihood of victimisation.

⁴ LGBT+ demographic group includes transgender persons and those who identified as gay, lesbian, bisexual or having another sexual identity.